

**The Timothy Freeman, MD,  
Center for Intellectual and  
Developmental Disabilities:  
*Internal and Community  
Partnerships and Impact***

*July 23, 2023 | NDSC | Orlando*

**Aurora Rivendale, MD**

Family Medicine and Psychiatry  
Assistant Professor  
Department of Psychiatry

**Christy Gregg, CTRS**

*Program Manager*



## **Aurora Rivendale, MD**

- dual trained physician in Family Medicine and Psychiatry
- passion for working with individuals with Intellectual and Developmental disabilities
- focus working in a collaborative care model as a psychiatrist to further aid individuals in their personal journey towards a healthy and full life as they define it

# Christy Gregg, CTRS

## Program Manager

[Christine.gregg@uchealth.com](mailto:Christine.gregg@uchealth.com)

- Sibling
- Certified Therapeutic Recreation Specialist (CTRS)
- Adult Services 2021-2022 LEND Trainee
- Over 21 years of experience in the field of developmental disabilities and non-profit work



## **Within this session you will learn about:**

- current work and services
- an interdisciplinary healthcare model within an academic health system
- collaborations and purposeful relationships
- importance of training students
- aspirations for the future

## VISION:

To become a **national** leader in providing healthcare for adults with intellectual and developmental disabilities (IDD) and training future physicians to care for those with IDD by creating an **interdisciplinary** center of excellence that provides specialized, coordinated, **patient-centered** healthcare to this historically underserved population.

## MISSION:

To provide specialized, coordinated, patient-centered healthcare for adults with IDD and train and empower future physicians to care for this population in their communities.

# HOW DID WE GET HERE?



For more than 30 years, **Dr. Freeman** focused his medical practice on the care of adults with intellectual and developmental disabilities. He was a pioneer in this field, caring for those with intellectual and developmental disabilities long before there was national recognition of the need for improved health care for this population.

Transition Clinic



Freeman Center

## **IDENTIFIED NEED:**

- Adults with intellectual and developmental disabilities (IDD) aging out of the pediatric health system
- Demand for adult services > current supply
- Significant health disparities that must be addressed
- Patient population requires highest level of coordinated care not available in present system
- UC Health is uniquely positioned to meet medically complex needs in a coordinated fashion via specialty access
- Freeman Center/Burnet is recognized as regional leader in IDD care but has reached capacity
- Outgrown current infrastructure within the Primary Care Network



# SERVICES:

---

- Primary care
- Behavioral health and psychiatry
- Physical medicine and rehabilitation
- Nurse care coordination
- Dietary support
- Clinical pharmacist
- Social work
- Community navigation
- Physical, Occupational and Speech Therapies
- Healthcare transition planning
- In-person and virtual healthcare visits
- Condition-specific health consultations
- Specialty care referrals



VALUE  
&  
IMPORTANCE  
OF A  
TEAM  
APPROACH

# PROVIDERS:

## PRIMARY CARE:

- Lauren Wang, MD
- Emily Johnson, MD
- Stephen Janssen, CNP

## PSYCHIATRY:

- Corey Keeton, MD
- Aurora Rivendale, MD

## PHYSICAL MEDICINE & REHAB:

- Jensine' Clark, MD



# SUPPORT TEAM:



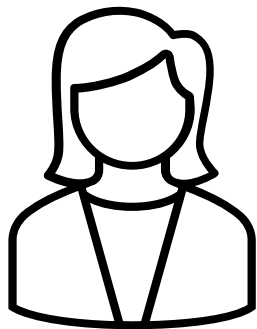
**Erin Burkey,**  
**RN**  
RN Care Manager



**Andrea DeRossett,**  
**LISW-S**  
Collaborative Care Manager  
Mental Health Therapist



**Christy Gregg,**  
**CTRS**  
Program Manager



**Kristin Harmeyer**  
Community Navigator



**Kelsie  
Newton**  
Dietitian



**Laura Shackelford**  
Behavior Support  
Specialist

# CLINICAL/SUPPORT TEAM:



**Shamyia  
Ford**  
Medical  
Assistant



**Michele  
Morehead**  
Clinical Operations  
Supervisor



**Ronesia  
Stone**  
Medical  
Assistant



**Ivery  
Upshaw**  
Medical  
Assistant

# FREEMAN CENTER TEAMS:



Interdisciplinary Team



Support Team



Patient Advisory



Advisory Board



Steering Committee

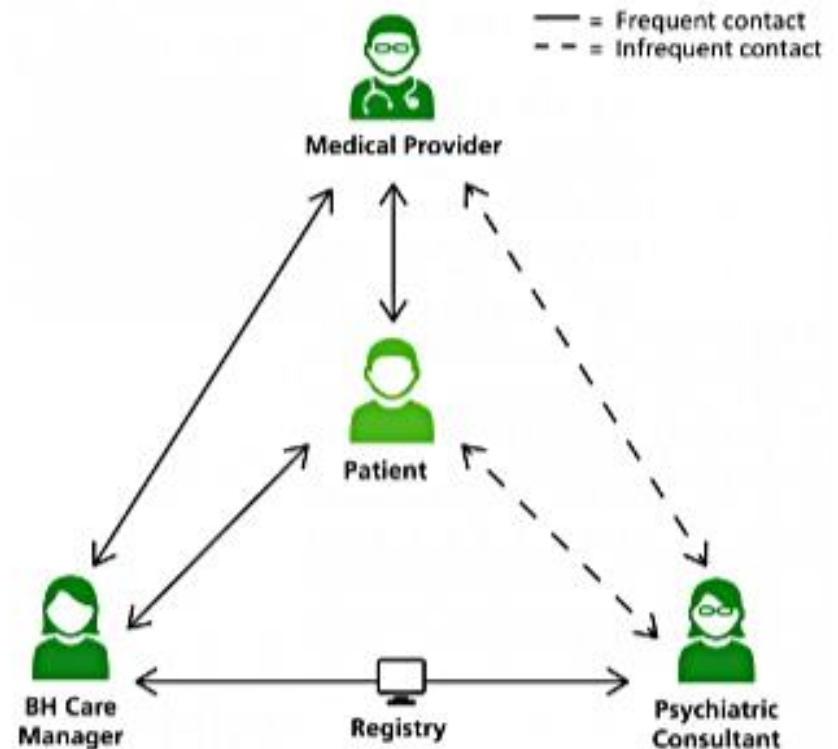


Local and National Committees

# COLLABORATIVE CARE:

Collaborative Care Model (CoCM) is an integrated behavioral health services program that includes a primary care physician or other clinician, a behavioral health care manager, and a psychiatric consultant.

**Freeman Center** is the **1st** in the US to offer Collaborative Care to individuals with IDD



## FREEMAN CENTER INITIATIVES:



Screenener



EPIC  
updates/goals



CPI Training



Sensory and  
Support Cart



UC Health | Timothy Freeman, MD, Center for Intellectual and Developmental Disabilities

### Accommodations, Behavioral Health, and Safety Assessment

*\*This screener is to be completed/updated regularly and we encourage updates to be provided from a patient, if any of these questions change\**

Name: \_\_\_\_\_ DOB: \_\_\_\_\_

How does the patient best communicate (vocal speech, sign language, communication device, etc.):  
\_\_\_\_\_

1. Are there basic accommodation(s) that could be made to help make your/the visit more comfortable? (Social story, fidgets, etc.)

Yes  No

If Yes, Please Explain:

*\*Please note we cannot guarantee availability of specific rooms or accommodation requests, but can strive to provide additional support as available to increase the success and comfort of an appointment\**

2. Does the patient have anxiety that may relate to their visits (ex. vaccines, blood draws, blood pressure checks, physical touch, crowded waiting room, too many people in the room, etc.)?

Yes  No

If yes, please explain:

3. What are things that help the patient to relax when anxious or that may help to calm the patient down? Preferred activities? Items?

4. Do you have individualized needs as it relates to anesthesia?

Yes  No

If yes, please explain and include any details about care plan, if applicable:

5. Do you anticipate any behaviors that could occur in anticipation of or during the visit?

Yes  No

If yes, please explain:

6. Has the patient or the team worked with a Behavior Support Specialist?

Yes  No

If yes, who: \_\_\_\_\_

7. What are the patient's triggers for behaviors? What makes the person anxious, angry, agitated (even slightly), and/or upset?

8. Does the patient have a history of aggressive behavior towards others, self, or property?

Yes  No

If yes, when did these types of behavior last occur? how often does the behavior tend to occur?

9. Does the patient have behavior strategies or a behavior plan in place?

Yes  No

If yes, could we get a copy? Yes  No

Can you please share any strategies:

10. Does the individual have any restrictions, as it would apply, to their healthcare visit?

Yes  No

If yes, please list:

**You may be contacted by Laura Shackelford, BSS UC Freeman Center, Andrea DeRossett, LISW, Mental Health Therapist or another interdisciplinary team member for planning/support purposes. They will work with you and the team to prepare for a successful visit.**



## **EDUCATION/TRAINING:**

We are committed to educating future leaders in healthcare through an innovative medical school curriculum, medical student rotations, residency rotations, fellowship opportunities, and training of interdisciplinary team members.



# IMPORTANCE OF TRAINING:



- IDD focused longitudinal curriculum for medical students at the University of Cincinnati (2020).
- Staff from the Freeman Center serve as advisors and mentors to the University of Cincinnati College of Medicine's IDD Medical Student Interest Group
- VSLO
- Developmental Medicine Fellowship
- Occupational therapy

## COLLABORATIONS:

- UC Champions
- UC Collaborative
- The University of Cincinnati Center for Excellence in Developmental Disabilities (**UCCEDD**)
- Leadership Education in Neurodevelopmental and Related Disabilities (**LEND**) Program
- Hamilton County Developmental Disabilities Services (**HCDDS**)  
*-Behavior Supports-transformative!*
- Local and National partnerships



# COLLABORATIONS: FUNDING

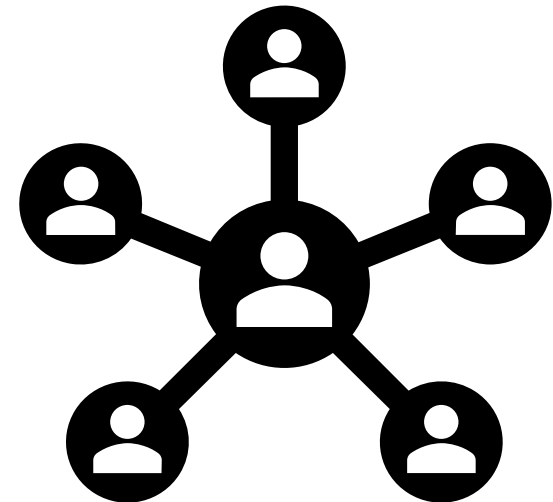
## NDSC

- Training
- Program Manager role

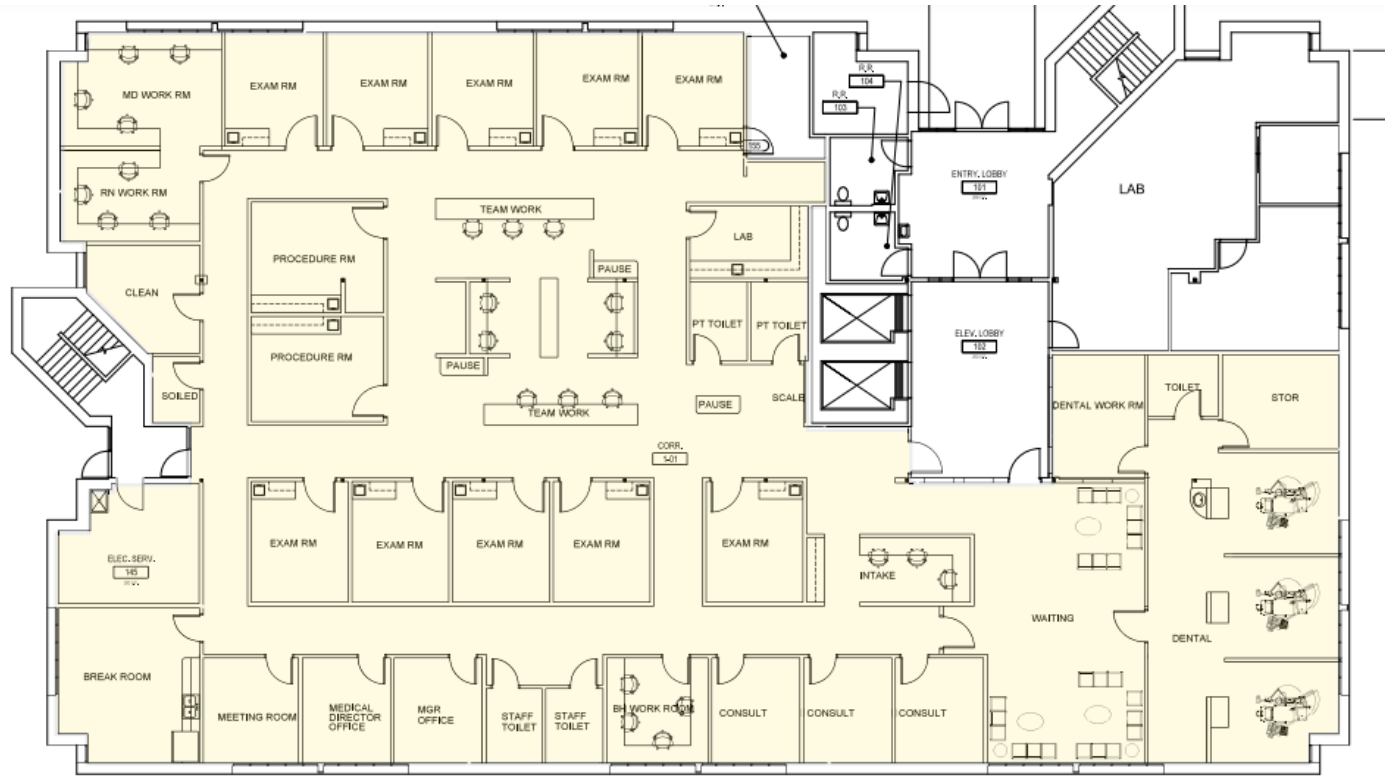
## Southwest Ohio Council of Governments (SWOCOG)

- Group of regional DD county boards
- Community Navigator- recently hired

## Local and National grants, budgets and funding opportunities



# FREEMAN CENTER CONCEPT DESIGN:



8900 SF (INCLUDES 1,200 SF DENTAL)

1.23.23

**TIMOTHY FREEMAN, MD CENTER FOR INTELLECTUAL AND DEVELOPEMENTAL DISABILITIES**  
 FIRST FLOOR - WEST PROFESSIONAL

## FUTURE GOALS:



- Launch Capital Campaign for a new space
- Enhance training, safety and accommodations offered at the Freeman Center
- Continue building internal teams
- Continue to expand Community partnerships
- Increased supports and collaborations in Aging and Future Planning

**For more information or to take the survey:**



**Freeman Center  
Survey**



**Freeman Center  
Website**

## CONTACT INFORMATION:



**EMAIL:**

[freemancenter@uchealth.com](mailto:freemancenter@uchealth.com)

**PHONE:**

513-585-9009

**FAX:**

513-585-9018

**ADDRESS:**

3120 Burnet Avenue  
Suite 401

PO Box 670769  
Cincinnati OH 45229

**WEBSITE:**

[Freemancenter.org](http://Freemancenter.org)





**QUESTIONS?**



IN SCIENCE LIVES HOPE.

THANK YOU!